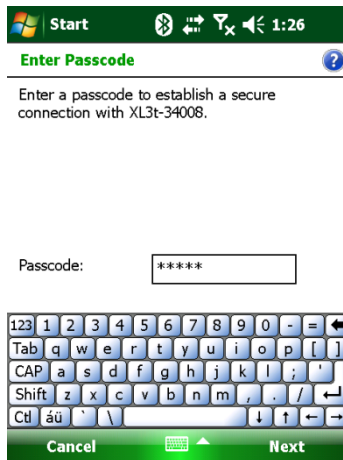


Setting Up the Bluetooth Connection to an XRF Device

- *Connecting a Niton XRF device with the PPC on Windows Mobile 5 or 6*
- *Connecting an Olympus Innov-X XRF device with the PPC on Windows Mobile 2003*

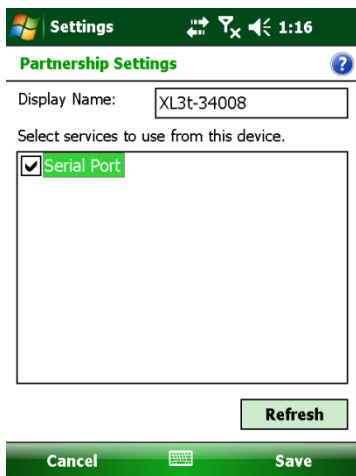
Connecting a Niton XRF device with the PPC on Windows Mobile 5 or 6

1. On the PPC, select the **Menu>Bluetooth Settings** option, and then enable the **Turn on Bluetooth** and **Make this device visible to other devices** options.
2. Start the Niton XRF device and log in.
3. On the PPC, select the **Menu>Bluetooth Settings** option again.
4. If the Niton device is not visible in the **Device** tab, select the **Add New Device** option, and select the Niton device once the device list is populated. Press **Next**.
5. Leave the **Passcode** empty and press **Next**.
6. The Niton device will now request connection with the PPC. Press **Yes**, enter the Niton Passcode “0000”, and then press **Done**.



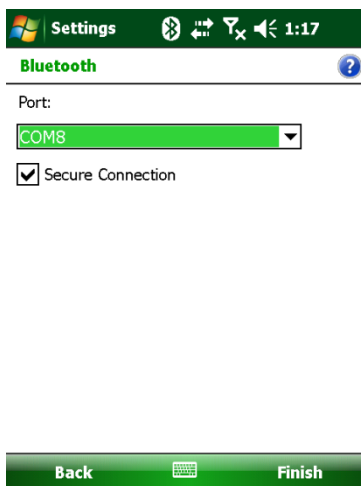
Entering the XRF password to open the Bluetooth connection

7. Back in the **Device** tab, select the Niton device and in the **Partnership Settings** dialog, enable the **Serial Port** option and press **Save**. If the **Serial Port** option is not displayed in the **Services** list, press **Refresh**.



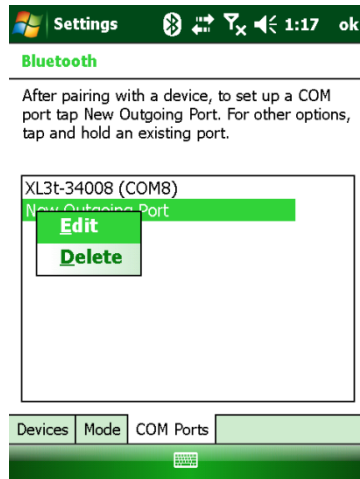
Enabling the Serial Port service

8. In the **COM Ports** tab, select **New Outgoing Port**, then select the Niton Device and press **Next**. Set the Port to “COM8” and press **Finish**.

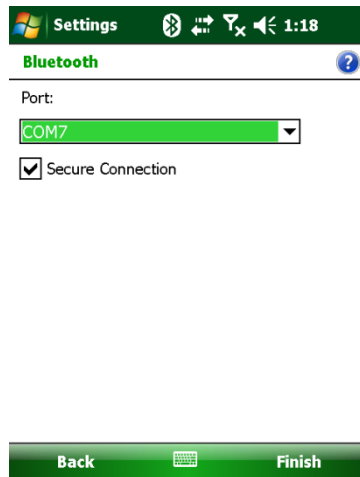


Configuring the Outgoing Port

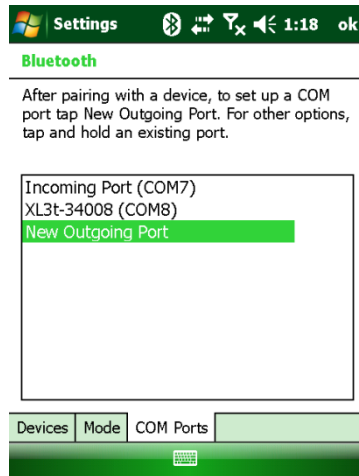
9. Gently select the Niton entry (but don't proceed to the next dialog). Then select and hold down on the **New Outgoing Port** option, and choose **Edit**. Set “Port 7” and press **Finish**. A new Incoming Port (COM 7) will be created. Press **OK**.



Creating and configuring a New Incoming Port 1) Hold down and press on the New Outgoing Port option, and select the Edit option from the pop-up menu.



Creating and configuring a New Incoming Port 2) Set COM port 7.



Creating and configuring a New Incoming Port 3) The final port configuration.

10. On the Niton device, go to **System>Bluetooth** and press the **Search** option.
11. Highlight the PPC device name from the list, press the **Config** button, and set the **Type** to "GIS". Press **Save**.
12. Select the PPC device name from the list, and press **Connect**.
13. On the PPC, enter the Niton Passcode "0000" when prompted, and press **Done**.

Connecting an Olympus Innov-X XRF device with the PPC on Windows Mobile 2003

Follow these steps to set up the Bluetooth connection between the PPC and an Olympus Innov-X XRF device:

1. Switch on the XRF device and ensure that the Bluetooth Wireless Radio is switched on.
2. Switch on the PPC and ensure that the PPC Bluetooth Wireless Radio is switched on.
3. Pair the Olympus Innov-X XRF with the PPC (see *Pairing an Olympus Innov-X XRF device with the PPC*).
4. Check the serial port settings on the PPC (see *Configuring the Serial Port on the PPC*).