

Set up multiple, project-related configuration files

You can specify the location of the GPInfo.gmp you want to use in your GPInfo session when you start the GPInfo program and this will override the default location for the file.

In this way you can keep the work you do on a particular project separate from other projects and tailor its contents in terms of display characteristics, queries, attached data files etc.

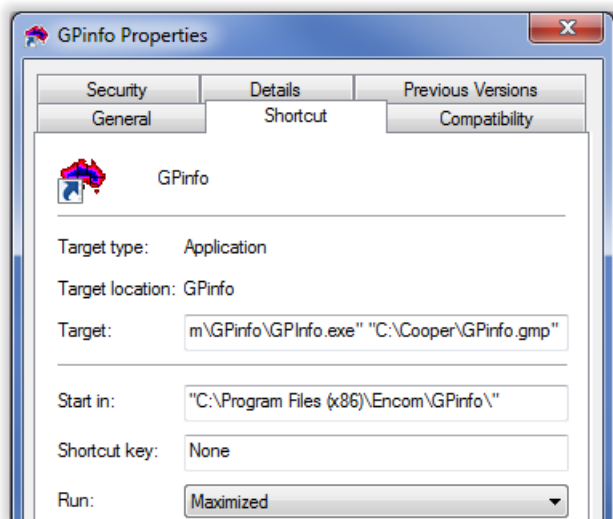
This mechanism can also be used to maintain separate configuration files for multiple users on a shared PC.

Method

1. Create a project folder, C:\Cooper for example.
2. Into the project folder, copy the file called GPInfo_sys.gmp which is found in the GPInfo application folder on your hard drive. This is the raw version of the GPInfo.gmp file with factory settings.
3. In the project folder, rename GPInfo_sys.gmp to GPInfo.gmp.
4. On your desktop, create a new GPInfo shortcut for your project folder, specifying the Target line as follows –

```
"C:\Program Files\Encom\GPInfo\GPInfo.exe" "C:\Cooper\GPInfo.gmp"
```

The first part is the path to the GPInfo executable and the second part is the path to the GPInfo.gmp file in your project folder.



5. Repeat points 1 to 4 for further projects, creating a series of GPInfo shortcuts on your desktop.

