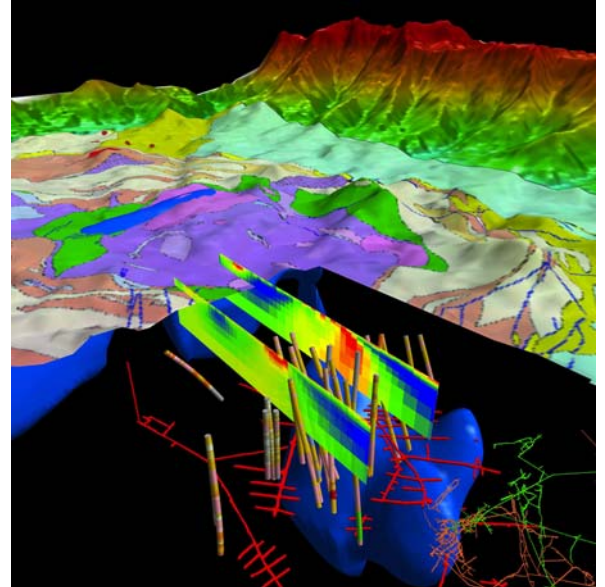
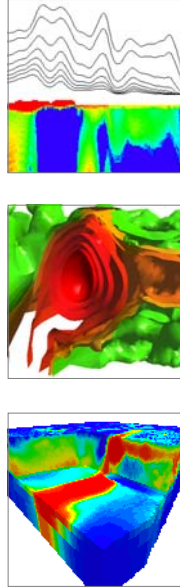


Level 1,
123 Walker St
North Sydney
NSW 2060, Australia
Tel +61 2 9957 4117
Fax +61 2 9922 6141

Web
www.encom.com.au
Email
info@encom.com.au

Encom Profile Analyst



What's New in Encom Profile Analyst 6.0

At a glance

- **Drag and drop capability**
Nearly all supported file types can be selected from Windows Explorer and dropped for display
- **True Type Font Support**
Symbols, text and labels can be used with True Type fonts to enhance displays
- **Projection Support**
For both data and grids you can convert and use projections from around the World
- **Expanded Filtering**
Both convolution and FFT filtering for grids and line data implemented
- **Grid Utility**
A new grid operations utility for editing, clipping, converting etc
- **3D Drawing**
Create points, lines and polygons on 3D surfaces and planes
- **3D Dynamic Clipping**
Expose the inner surface of any 3D view with the new 3D arbitrary clipping plane
- **3D Gridding**
A new powerful 3D Gridding tool allows a wide range of data to be gridded and manipulated with filtering, merging, resampling etc

What's New in Profile Analyst 6.0

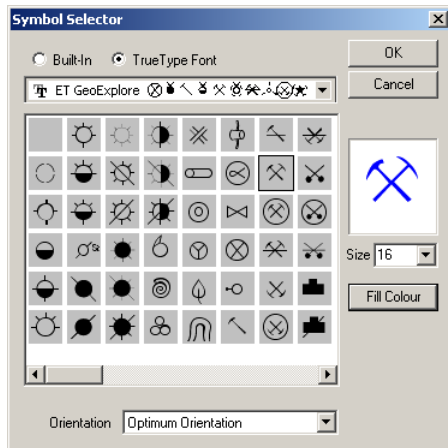
Image Display

Improved image manipulation and display provides faster rendering with access to more data formats.

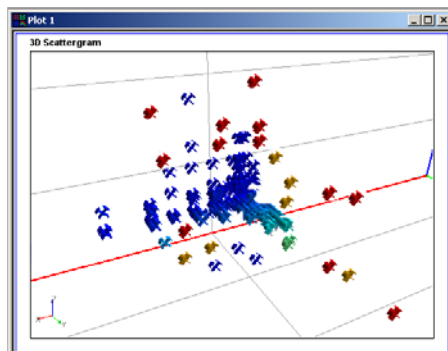
- Native access to ECW compressed images or to ER Mapper algorithms.
- Improved sun-shading algorithms
- Additional formats supported

True Type Font Support

- All symbols and text can now use True Type fonts.
- In profiles and maps, font support allows specialist symbols to be used.



- In 3D displays, True Type fonts are extruded to create 2D objects



World Projection Support

Data projections and conversion from one projection to another is now supported.

- A wide range of world projections and datums are provided.
- User defined projections are supported.
- Data grids can have their projection assigned and reprojected if required.

Located Bitmaps

New and versatile bitmap display provides new controls for a wide range of objects. Use of Located Bitmaps can provide control over literally 1,000's of objects with fast display.

Conversion Utilities

A wide range of useful conversion utilities has been added to allow import and export of a wide range of data formats.

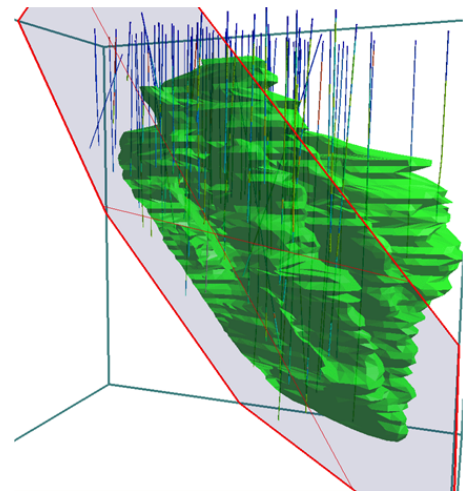
A choice of menu designs is provided to assist finding the tools you want.



3D Cursor

The new 3D cursor control provides the ability to attach the cursor to a surface or arbitrary clipping plane. With this too you can:

- read back the X, Y, Z coordinates of the cursor
- digitise points, lines and polygons on a plane or surface
- create 3D objects such as fault surfaces or closed target volumes from digitised lines and polygons
- dynamically clip the 3D volume to reveal the internal structure of complex views



Project Management

Manage your projects and file path navigation to data, grids etc by either:

- Assigning a Project folder, or
- Request the software 'remember' the last location for a particular file type.

Additional Utilities

New utilities include:

- Clipping of a database to reduce its coverage to a specific area
- Export a database to an ASCII file with many options for line and data field selection plus output format definition.
- Extrude 2D polygons to build 3D objects
- Object and data transformation utilities

Utility Module

Grid Utility

A new Grid Utility provides a suite of available operations.

Clip

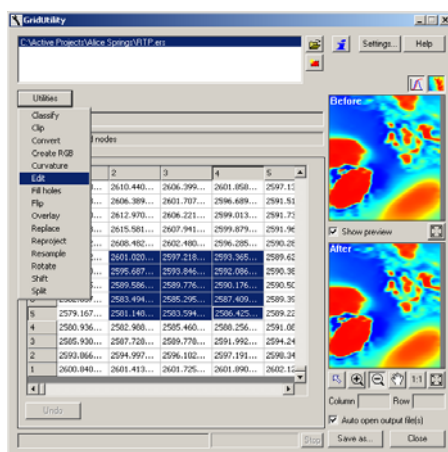
- Cut a rectangular or polygonal shape from a grid

Convert

- Registered images between different file formats

Edit

- Alter individual node values of a grid



Flip or Rotate

- Alter the orientation of a grid

Re-project

- Change the projection/datum information for a registered grid or image to another

Resample

- Use interpolation procedures to change the sampling interval of a grid.

Shift

- Apply a transformation of a grid by offsetting its origin.

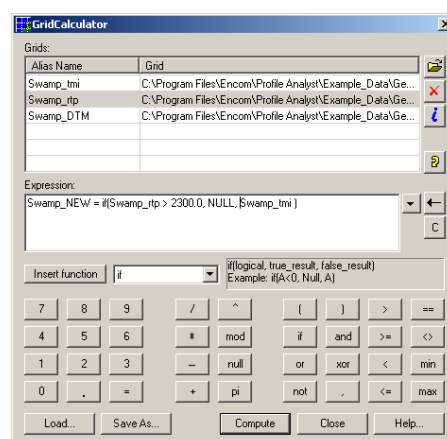
Split or Merge

- Multibanded grids can be split or created

Enhanced Calculators

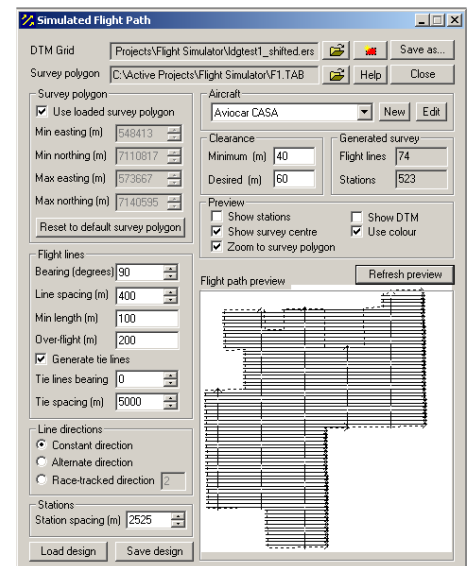
The Line and Grid Calculators have been extended to provide powerful functions and logical operations.

- Boolean operators provided
- If, Then, Else constructs available
- Full trigonometric functions
- NULL handling in logic
- Simple syntax and Save/Load of expressions.
- New Feature Calculator to provide similar functionality to Feature Manager database fields.



Flight Simulator

Design and experiment with survey design over a specific terrain and within a polygonal area.



- Select aircraft or design your own specifications for aircraft performance.
- Uses advanced 'look-ahead' and aircraft climb/fall characteristics for drape or fixed-height surveys.
- Specify traverse and tie-line directions and separations.
- Calculate survey distances and sample points.
- Save survey design to a database

Low Latitude Filter

Interpreting magnetic data acquired at low magnetic latitudes (less than 15-20° magnetisation vector dip) is difficult due to the complexity of observed anomalies. A new grid filter to produce RTP (Reduction-To-Pole) grids using analytic signal computations is provided.

Drillhole Module

Drillholes

A new survey import utility has been added to allow reading of ASCII collar, survey and downhole data. The interface of this tool is a wizard that allows you to define the required data fields. Full NULL support and desurveying is provided.

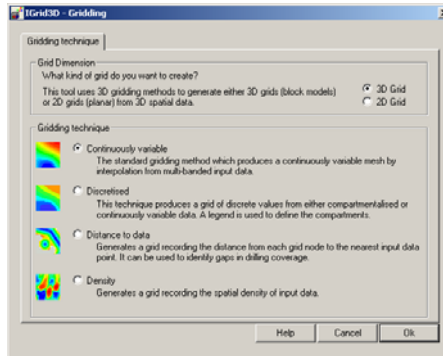
- Data can be in To-From sample format or Point measurement (eg geophysical logging).
- Support for Geosoft WHOLEPLOT, Encom Discover and acquire drillhole databases is also provided.

Voxel Modeller Module

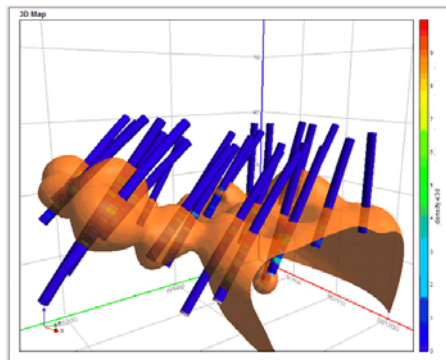
3D Grid Toolkit

A new 3D Gridding Toolkit provides the ability to create 3D Voxel Models from most formats of 3D data (including drillholes, depth inversions, CDI sections etc).

- Wizard interface for easy operation



- Operates on continuously varying or discrete data
- Database or ASCII data input



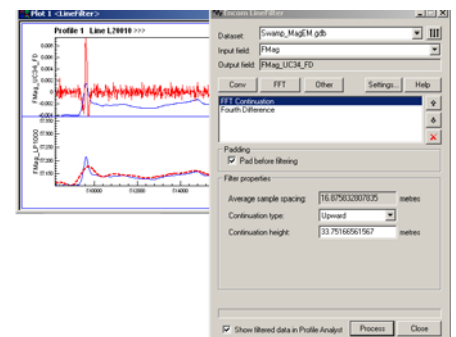
- 3D model filtering
- 3D grid model utilities (merging models, resampling, NULL assigning)

- 3D Grid Calculator
- Data pre-conditioning with NULL handling, nugget effect compensation and configurable search criteria.

Line Filtering

In addition to grid filtering, a new Line Filtering module has been added.

- Advanced convolution and FFT filters.
- Range of filters includes average, Gaussian, band pass, continuation, derivative, plus geophysical filters for pseudogravity, reduction-to-the-pole and to the equator.
- Specialist filters such as analytic signal, AGC, 4th difference etc.



For more information

For more information about any of Encom's products and services, please contact Encom directly or visit our website at www.encom.com.au

Our staff can provide detailed product brochures, software evaluation copies and arrange software demonstrations. Encom stages displays, demonstrations and training sessions at many of the major industry conferences around the world each year. See our website for details.

Head Office

Level 1, 123 Walker St
North Sydney
NSW 2060, Australia
Tel +61 2 9957 4117
Fax +61 2 9922 6141

Web

www.encom.com.au

Email

info@encom.com.au