



Encom Discover Mobile



What's New in Encom Discover Mobile 2.0

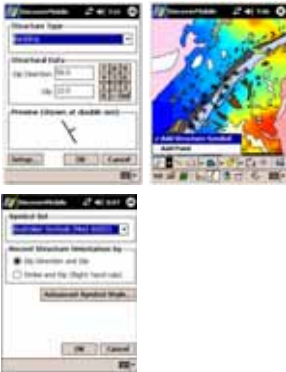
At a glance

- **Structure Mapping**
Record and display structure measurements
- **Dynamic Map Grid**
Place dynamic coordinate grid on screen
- **Dynamic Scalebar**
Place dynamic scalebar on screen
- **Waypoint Navigation**
Use GPS position to navigate to selected waypoints
- **Hotlinking**
Link map objects to external files
- **Hardware Button Mapping**
Link Discover Mobile functions to device buttons
- **ECW Raster Support**
Open ECW files via MapInfo TAB
- **Preferences**
New and improved preference options

New features

Structure Mapping

- Record and display structural measurements using Discover's standard symbol sets. Collected data fully integrates with Discover on the desktop.



Dynamic Grid Overlay

- Place dynamic map grid on screen



Dynamic Scalebar

- Place dynamic scalebar on screen

Waypoint navigation

- Use GPS position to navigate to selected waypoints



Hotlinking

- Link map objects to external files, such as photos, voice recordings, Pocket Excel, etc.



ECW raster support

- Open an ECW file via Open Table

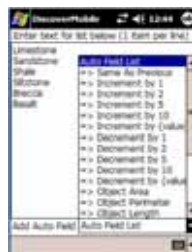
Hardware button mapping

- Link selected Discover Mobile functions to device buttons. Includes new power-saving option to turn off the device screen but keep Discover Mobile running.



Pick Lists

- New option to associate a pick list with one table only
- New "AutoField" option for entries (eg. Read-only flag, hotlinks)



and more...

GPS

- Current connection status added to Discover Mobile title bar



- New option to label current position symbol with any GPS data value
- "Capture Structure Symbol" option added
- New ability to capture points at the same time as capturing polylines
- Improved layout and functionality of the Monitor/Check Connection screen



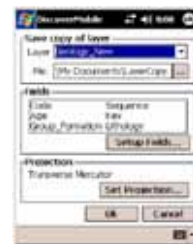
- New option to customise communication settings for GPS scan function



- Improved support for 3rd-party CF Bluetooth cards

Table Editing

- 'New Table' dialog modified
- New ability to modify table structure and include new fields when saving a copy of the table (Save Table Copy As ...)



Named Styles

- Support for multiple NamedStyle library files
- "Edit attributes and Named Style?" prompt now displayed when manually drawing an object



Preferences

- Modified Preferences screen
- More preferences saved between sessions
- New preference options:
 - Map Projection
 - User Projection
 - Grid Overlay
 - Waypoint Tolerance
 - Hardware Buttons
 - Pick lists
 - Hotlink files

Operating Platforms

- Support for Windows Mobile 2003
- Support for new Trimble Recon (Pocket PC) model

Other

- Updated menu structure
- Updated abbreviations to SI units
- Delete "X" icon changed to rubbish/trash icon
- "Create cosmetic layer" changed to "Add cosmetic layer"
- New symbol picking dialog
- Improved performance of distance measurement and XY point coordinate tools
- Extra View menu options: Map Grid, Scale Bar and Table Browser
- Improved support for user projections
- Canadian grid files included for the NT2V transformation routine