

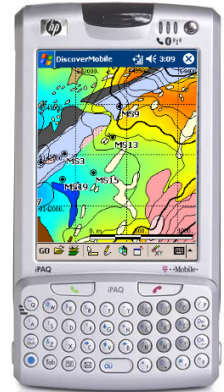
Encom Discover Mobile

Head Office
Level 1,
123 Walker St
North Sydney
NSW 2060, Australia
Tel +61 2 9957 4117
Fax +61 2 9922 6141

European Office
19B College Parade
Salisbury Road
Queens Park NW6 6RN
London, United Kingdom
Tel +44 2073 729 275

Web
www.encom.com.au
Email
discover_mobile@encom.com.au

What's New in Encom Discover Mobile 2.5

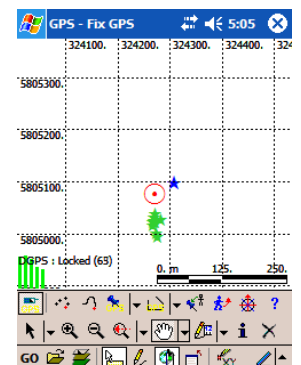
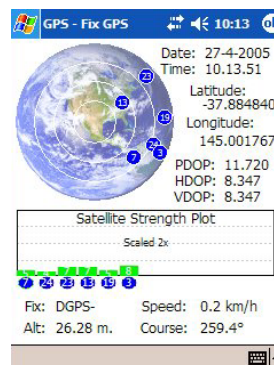
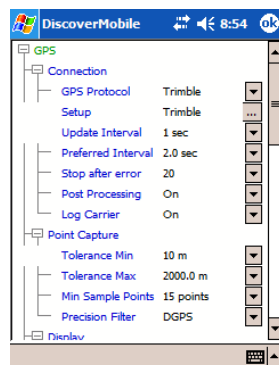


GPS

- added point averaging option to GPS position collection
- improved GPS communication routines to support additional NMEA strings
- improved handling of user-defined projections when capturing GPS points
- added native Trimble TSIP protocol support



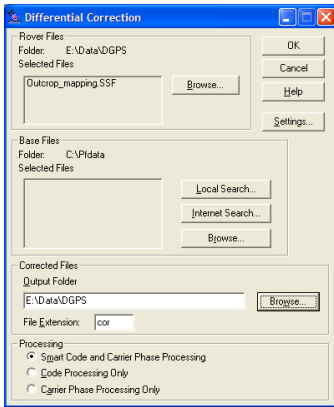
- position fix quality displayed above the Satellite Strength Plot
- disconnecting the GPS turns off the Line/Point logs before reconnection
- added automatic scaling option to Satellite Strength Plot
- added Carrier Phase Lock status indicator and timer



What's New in Discover Mobile 2.5

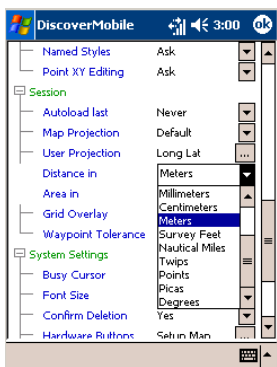
Post Processing

- added Trimble post processing support option (requires Encom Discover 7.0 and Trimble Pathfinder Office 3.1)



Preferences

- added an **Area In** option in the Preferences dialog allowing a choice of area measurement units
- Distance In** option in Preferences also controls the scale-bar units



- added extra **Alert Configuration** options
- added new **Check for Mapped Buttons** option to hardware button mapping to keep default device button mapping

Edit

- added new Edit>Selected Point Location menu
- added new Edit>Selected Object Style menu

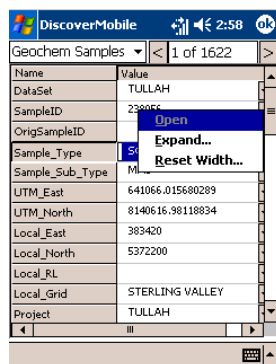
Quick Pick

- improved Quick Pick functions (Area, Perimeter, Auto increment)
- Same as Previous** and **Set Constant Value** Quick Pick options now automatically apply to string fields
- new pick list templates provided for lithologies, regolith, grain classifications and more



Browser

- improved performance
- improved column sizing behaviour
- added auto word wrap for expanded string fields
- added **Reset Width** option to Browser pop-up menu to resize column widths to default values



- warning added to prevent hotlinks exceeding column width
- string fields can now be incremented e.g. YB1, YB2, YB3

Tools

- prompts for Insertion Layer before adding polylines or polygons

File

- added **Open Table** button to the Clone From option of Go>File>New Table

General

- updated to MapInfo MapX Mobile 5.05
- changed the installation procedure to facilitate field reinstallation (without the need for a laptop) in the event of device memory wipe
- added warning prompt for **Exit** command

Bug Fixes

- incorrect plotting of structural symbols fixed
- fixed problem with **Waypoint Navigation** tool erroneously reporting that the destination had been arrived at
- fixed problem with deletion of objects when using **Edit Nodes**
- fixed keyboard pop up covering browser entries
- improved **Info** tool to browse objects from same geographic area when switching tables
- improved handling of deleted objects
- Named Styles** can now be applied to freehand polygons
- improved **Scale** option of the Zoom Level tool
- Line** tool can now have attributes edited, etc
- pull-down list of Quick Pick options in browser window only opens manually
- forced refresh of field names when switching between tables using **Info** tool

System Requirements

Discover Mobile 2.5 requires a handheld computer running Windows Mobile 2003. No separate MapInfo solution is required.