

MapInfo Discover & Discover 3D 2015 32-bit

NEW FEATURES

MapInfo Pro support

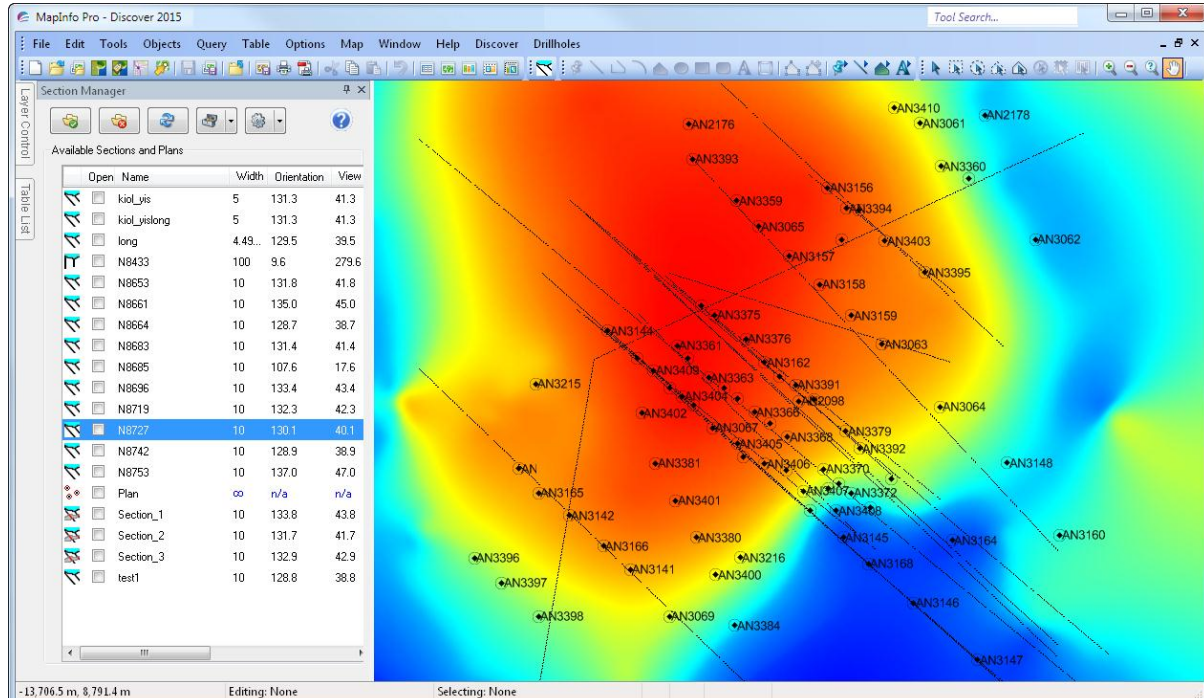
- Requires 32-bit version of MapInfo Pro 12.5 or 15.0

General improvements

- MapInfo Discover 3D can now clip rotated voxel (block) models with vector volumes.
- MapInfo Discover 3D now includes the ability to show a topology report for selected solid feature objects. This assists with the identification of holes in solids, allowing the user to resolve any such issues with the various advanced feature editing tools, prior to export.
- Acquire Database support has been updated to version 4.5.0.1.
- A Check for Updates option is provided during installation to check that your product is fully up-to-date.
- Numerous stability improvements and bug resolutions have been implemented.

Drillholes: Section Manager

- The Section Manager (Drillholes menu) can now be docked like other MapInfo Pro windows (such as the Layer Control and Table List), ensuring a more organized and efficient work environment.
- The Section Manager can be used while other dialogs are open, regardless of the User Level settings.
- Its content is now automatically updated whenever a new drillhole project is opened.

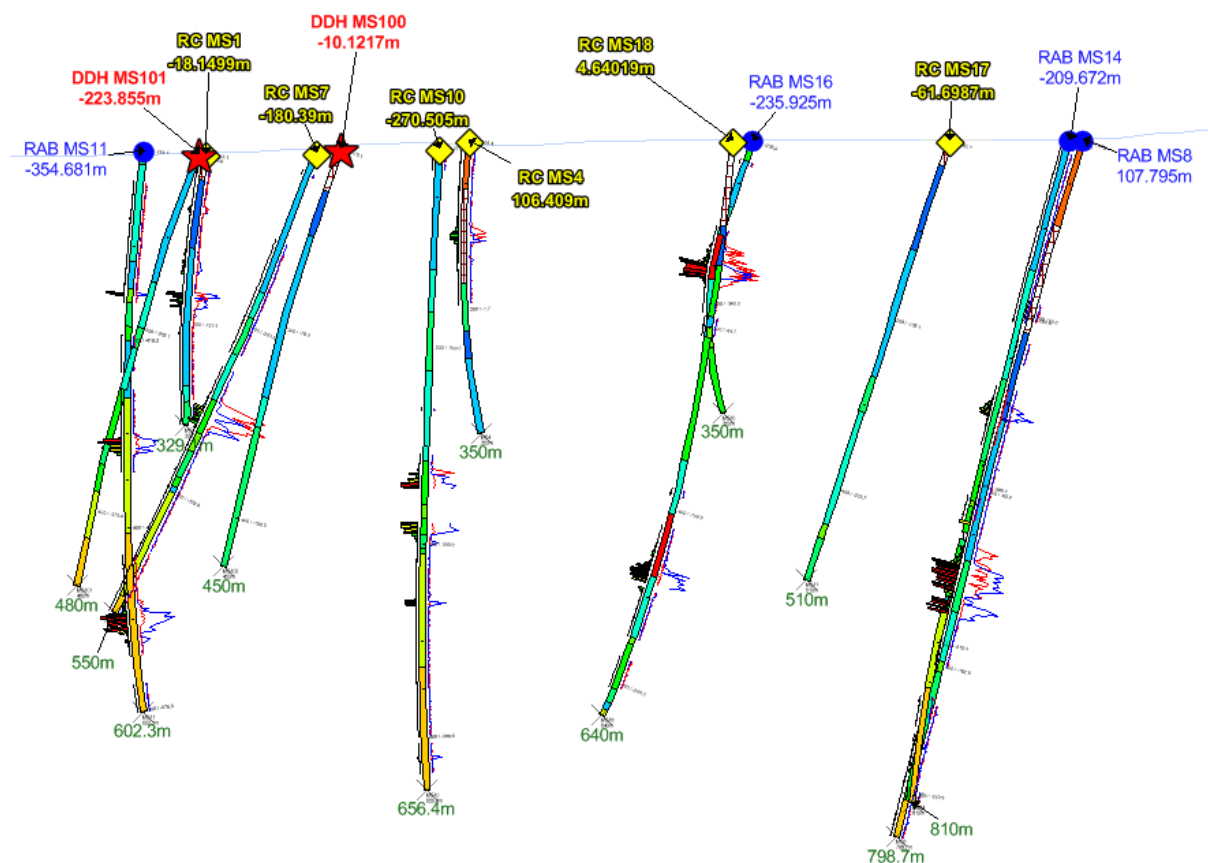


The new dockable Section Manager allows you to optimise your MapInfo Pro environment when working with drillhole projects.

Drillholes: Enhanced drillhole cross-sections

Enrich the impact of your drillhole sections with fully customizable collar symbols and labels. MapInfo Discover 2015 introduces a new Section Point Layer for collar and end-of-hole (EOH) locations. These point layers contain all the collar file attributes, allowing a rich range of cartographic refinements and enhancements on long- and cross-sections, including:

- Custom collar and EOH symbols, using all MapInfo Pro symbol types, colours and sizes.
- Custom collar and EOH labels, using the full range of MapInfo Pro capabilities, such as label position, colour, font, offset distance, etc.
- Detailed and informative labels, using MapInfo Pro expressions to combine and format multiple fields.
- Thematically mapped collar symbols, allowing the clear visual differentiation or identification of collars by an important attribute field, such as drilling type (e.g. RAB/RC/DDH), drilling contractor, or year drilled.



Enhance the value and effectiveness of your cross- and long-sections using the new Point Layer to display professional and informative labels and collar symbols.

Drillholes: Improved drillhole database handling

- Drillhole projects have a revised validation routine with more thorough and comprehensive checks.
- User is informed of validation issues prior to processing data, enabling the user to fix the issues before they are processed.

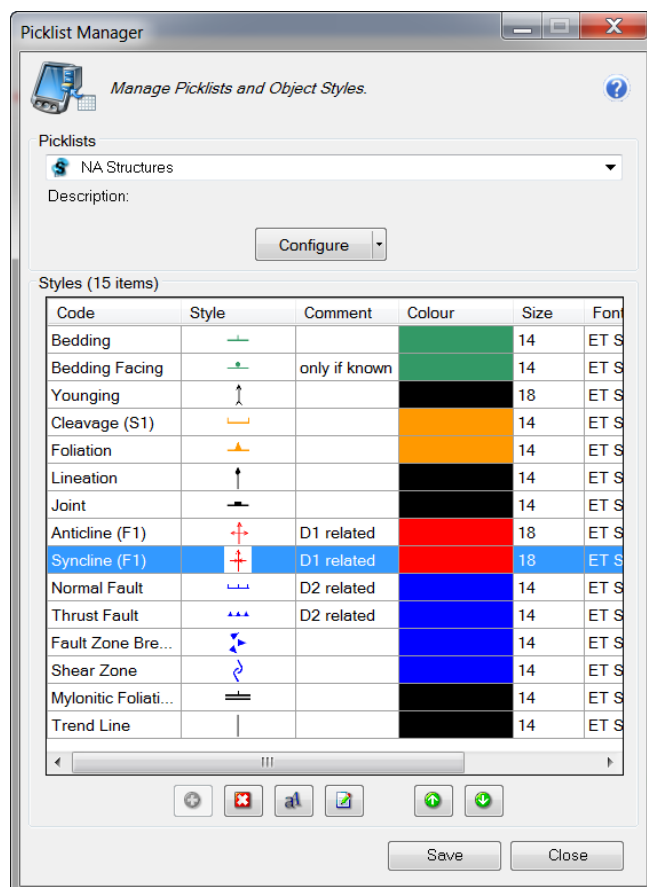
Drillholes: General

- Section legends now represent structural ticks, including structure type, line style and line colour.
- The view direction of cross-section envelopes is now represented graphically in collar map windows, when previewed by the Section Manager or the Define New Section tools.
- Display Downhole Data tool now prompts the user prior to overwriting existing section annotations.
- Collar lists in the Define New Section tool are now sorted alphabetically similar to other MapInfo Discover dialog lists.

Data Entry: Improvements

Many enhancements have been implemented to streamline and extend the already extensive capabilities of the Data Entry module:

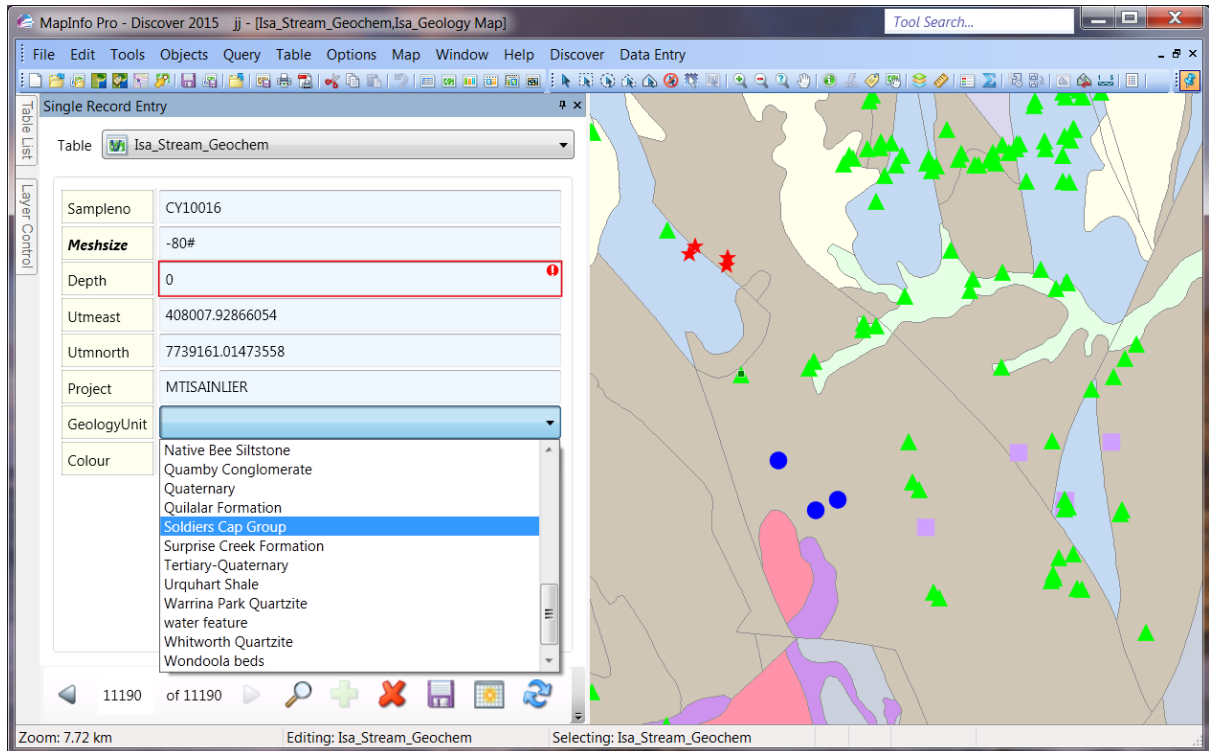
- A new 'Comment' field allows detailed descriptions to be added, explaining concise or abbreviated primary 'Code' field entries.
- The Data Entry module now allows fields to be set as 'Optional' (this is the default assignment). If disabled, these become compulsory fields that must be populated (whether by picklist or text entry) for the record to be valid. This is only applicable to non-numeric fields, including date and time field types.
- Customised Structural Symbol Picklists can be created—for example, create a concise list of only those structural types appropriate to the field area or your company's standards. These picklists can be further tailored with custom structural symbol colours and sizes, specified symbol order, and explanatory comments.



Build streamlined and customised structural symbol picklists for optimised and uncluttered data entry and field data capture.

Data Entry: Single Record Entry

- The new Single Record Entry tool enables more streamlined data capture.
- Like other MapInfo Pro windows (such as the Layer Control and Table List), the Single Record Entry tool is dockable, allowing an organised and uncluttered environment for efficient capture and attribution of individual records.



The dockable Single Record Entry tool makes accurate data entry and capture fast and efficient.