

What's New in MapInfo Discover 2015.2 64-bit

Bundle

The **MapInfo Discover 2015.2 64-bit Bundle** installs and licenses the following applications:

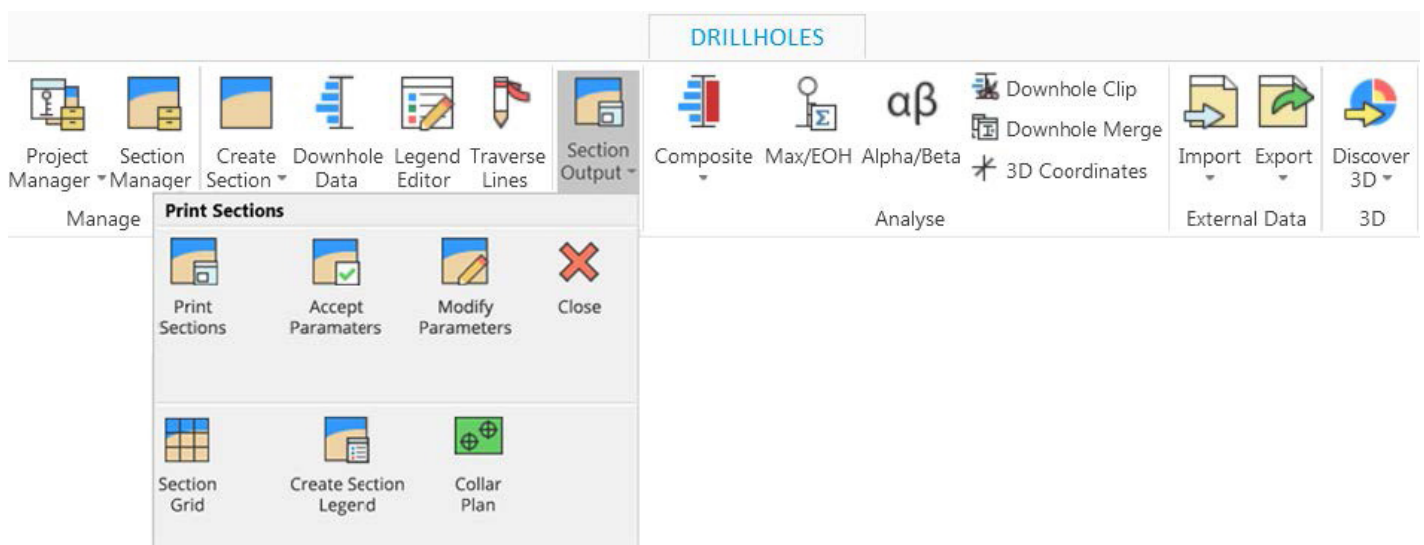
- MapInfo Pro Advanced 15.2 64-bit (includes **MapInfo Pro Raster**)
- MapInfo Premium Services
- MapInfo Discover 2015.2
- MapInfo Discover 3D 2015.2 (optional license option)

Native 64-bit version

- First native 64-bit version of MapInfo Discover
- Supports Windows 10
- Supports MapInfo Pro Advanced 15.2 64-bit (only)
- acquire Database support has been updated to version 4.5.2

Ribbon-style interface

MapInfo Discover 2015.2 has a new look. The modern and intuitive ribbon-style interface integrates visually and functionally with the MapInfo Pro 15.2 ribbon tabs. Tools are grouped horizontally by workflow and vertically by function for improved efficiency and ease-of-use.



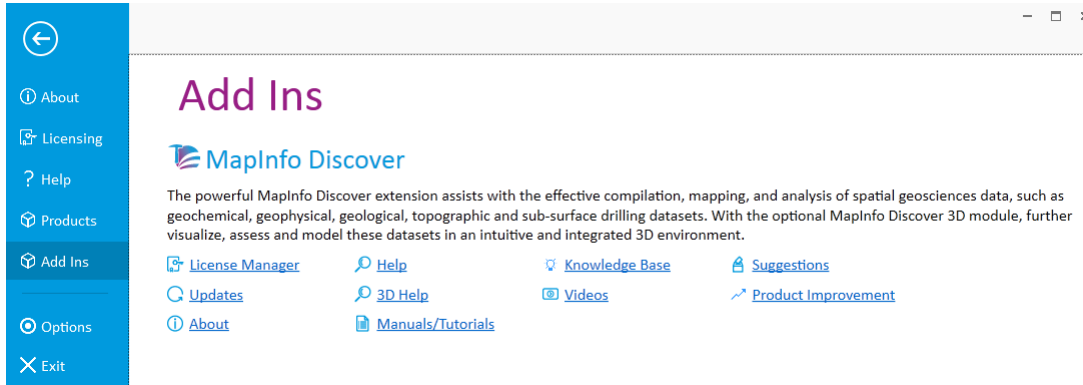
The tool icons provide clear visual clues to function and are consistent with the MapInfo Pro symbolology. These fresh new icons have been implemented consistently across the entire interface, including ribbon tabs, Tool Search, tool dialogs, and the Help.

PRO tab

The PRO tab provides quick access to a broad range of “backstage” tools and resources designed to enhance the user experience:

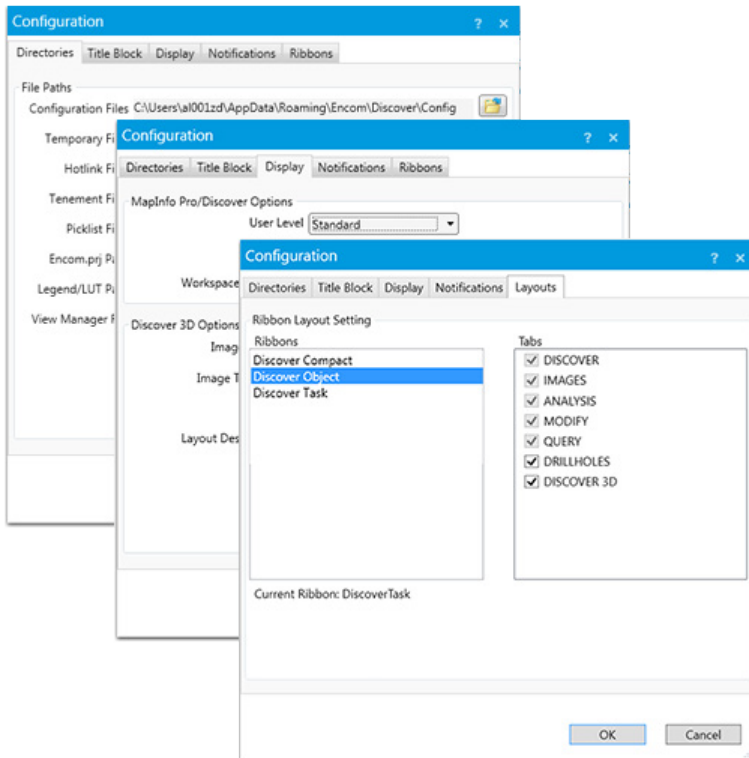
USER RESOURCES

Choose **PRO>Add Ins** to access all MapInfo Discover user resources. Check for maintenance updates, view license information, open MapInfo Discover and MapInfo Discover 3D Help, access printable manuals and tutorials, and more.



PREFERENCES

Choose **PRO>Options>Configuration** to view and customise the installation settings. Settings are conveniently grouped on tabs.



Choose the Ribbons tab on the **PRO>Options>Configuration** tool to personalise your copy of MapInfo Discover. Choose a ribbon layout that best suits your workflow, or turn specific tabs on or off.

MapInfo Pro enhancements

Benefit from the many new capabilities and enhancements of **MapInfo Pro Advanced 15.2 64-bit**



- Create and improve cartographic output fast, courtesy of an enhanced layout designer. Faster processing due to various performance improvements and a full 64-bit application.

- Support for larger file sizes and multi-lingual (Unicode) datasets improve data access.



- With new support for touch-screen tablets, it's easier than ever to use MapInfo Pro™ for efficient mobile working. Includes multi-touch gestures such as two-finger panning and pinch-to-zoom



- Super-fast processing, visualization and analysis of high resolution grid data on a global scale with the Multi-Resolution Raster technology of MapInfo Pro™ Advanced

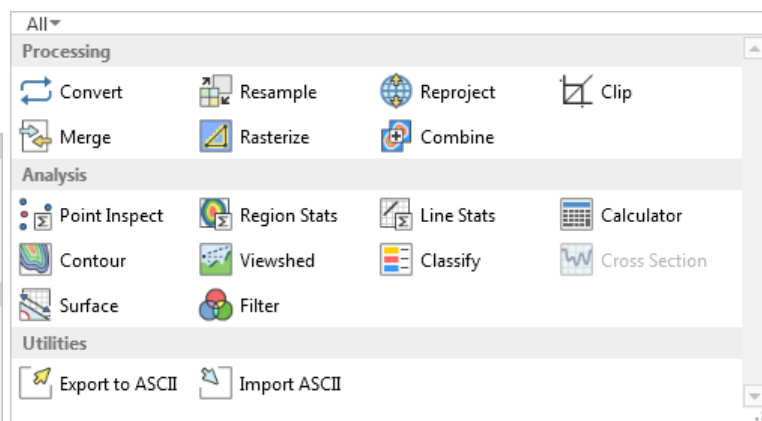
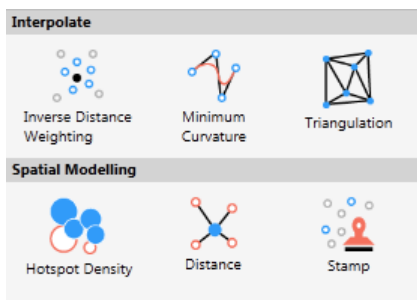
MapInfo Discover 2015.2 64-bit also incorporates all the new features from MapInfo Discover 2015 32-bit, including:

- Dockable and improved Section Manager
- Enhanced cross-section display options, including new point layer
- Improved drillhole database handling
- New dockable Single Record Entry tool
- Numerous Data Entry improvements, including customizable Structural Symbol picklists

MapInfo Pro Raster

MapInfo Pro™ Advanced v15.2 introduces the GIS industry's most advanced raster grid analysis solution, **MapInfo Pro Raster**, featuring the innovative Multi-Resolution Raster (MRR) grid data format.

- Enables super-fast processing, visualization and analysis of high-resolution grid and image data, delivering a step change in performance and usability even when working at a continental or global scale.
- Unmatched support for true multi-resolution raster files, multiple variables and hyperspectral imagery.
- "Pyramiding" efficiently displays data at all zoom levels.
- Supports both numeric and classified (categorical) data in the same file.
- Replaces the Surfaces module.
- Will integrate with the entire MapInfo product line, including Spectrum Spatial and MapXtreme.



The screenshot displays the MapInfo Pro interface with the 'RASTER' tab selected. The main window shows a map of the USA National Landcover 2011. Several callout boxes highlight key features:

- Easy and intuitive to learn – a seamless addition to MapInfo Pro.** (Points to the RASTER tab)
- Great performance! See your display changes instantly.** (Points to the 'Display' button in the Properties panel)
- Powerful grid processing and analysis capabilities!** (Points to the 'Processing' panel)
- Information and statistics about your grid data at the click of a button.** (Points to the 'Statistics' button in the Properties panel)
- Core capabilities are accessed through easy to use panels.** (Points to the 'Cell Value', 'Statistics', and 'Raster Info' buttons at the bottom of the Properties panel)

The Properties panel on the right shows details for the raster file 'nlcd_2011_landcov_2011_edint.mrr', including its name, file extension, format, and spatial bounds.

