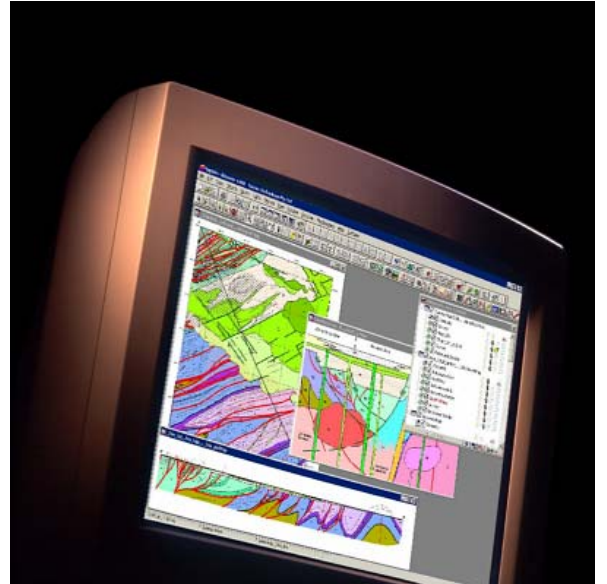




# Encom Discover 6.1



## What's New in Encom Discover 6.1

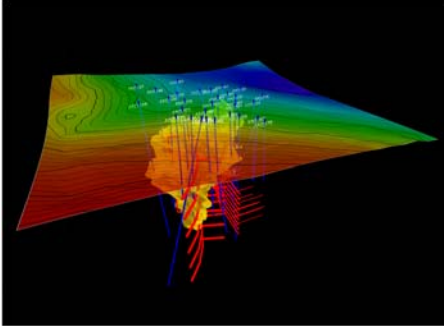
Encom Discover 6.1 is the latest update to the Encom GIS product suite. Discover 6.1 replaces Discover 6.0 as the premier geoscience application for MapInfo Professional GIS. Discover 6.1 contains a number of exciting new features as well as many improvements to existing tools. The most notable addition to Discover 6.1 is support for an all new 3D module – Encom Discover 3D.

Encom Discover 3D is a separately purchased add-on module that fully integrates with Discover 6.1 and MapInfo Professional. Using Discover 6.1 and Discover 3D you can view your exploration data including maps, surfaces, drillhole data, sections, logs, 3D objects and geophysical models in a powerful, interactive 3D visualisation environment. In fact, any data you have in MapInfo/Discover can be transferred to Discover 3D for more detailed analysis and investigation.

As well as supporting Encom Discover 3D, Discover 6.1 provides additional Import and Export functionality with the inclusion of MineSight SRG and Vulcan Archive files, as well as a new interface to access data from an acquire database. A new interface has also been introduced for creating and editing drillhole colour patterns.

## Discover 3D Module (Optional)

A new Discover 3D menu provides access to Encom Discover 3D. Discover 3D is a completely new add-on module for Discover and is available for purchase separately.



## Map Window

### Standard Views

- new option to save and restore the zoom level, centre and dimensions of a map window

## Map Making

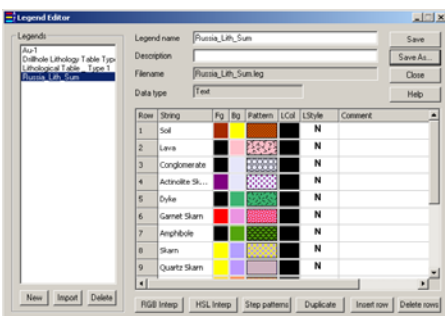
### Line Annotation

- new symbol option to allow any supported MapInfo symbol to be used as a line annotation
- new option to place annotations along the left or right of lines according to their line direction

## Drillhole Display

Several new features and improvements have been made to the Drillhole module in Discover 6.1, including:

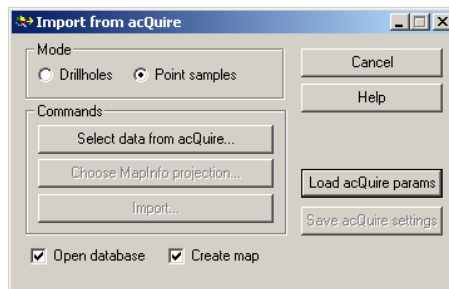
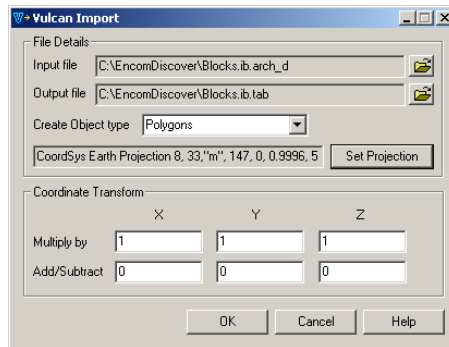
- a new interface for building and editing drillhole colour patterns
- a new option to set a fixed scale in a log text column
- additional user settings now saved
- Strip Log global display and annotation settings split into separate dialogs



## Import / Export

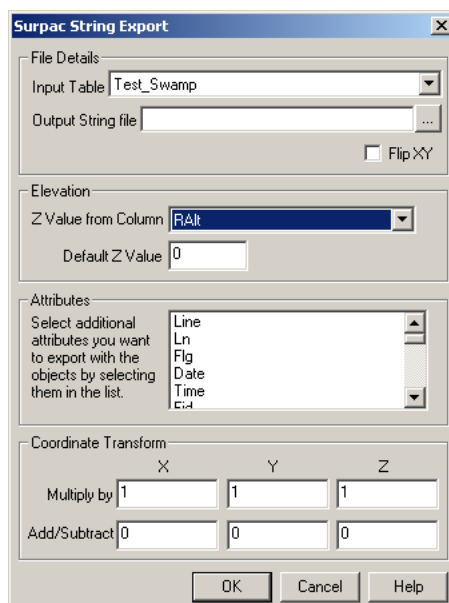
### Import

- MineSight .SRG added
- Vulcan .ARCH\_D added
- improved acQure support to read geochemical point samples and save/restore query parameters
- support for acQure Data Model 3.81



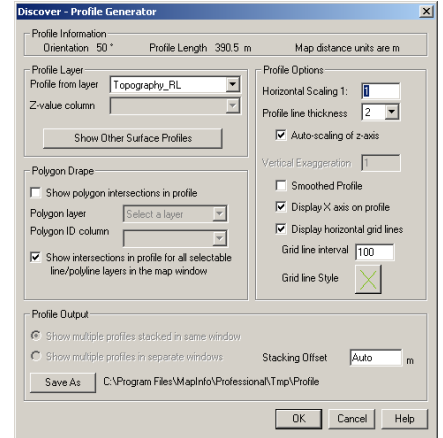
### Export

- MineSight .SRG added
- Vulcan .ARCH\_D added
- new option to select Z-value column when exporting Datamine, Surpac and MineSight string files

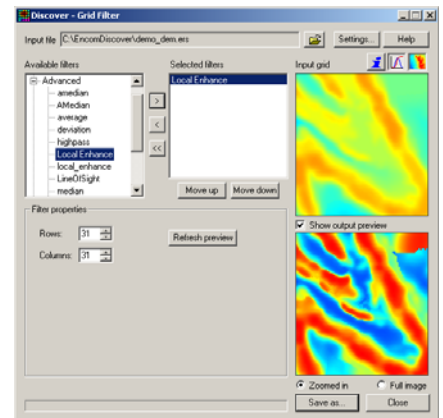


## Surfaces

- draw Grid Profile dialog and functionality improved for the generation of grid profiles



- extra advanced grid filters added to the Grid Filter tool



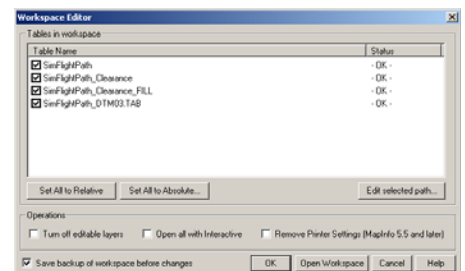
## Table Utilities

### Multiple Column Update

- expanded functionality to allow up to 30 columns to be updated at the same time

### Workspace Editor

- Set All to Relative and Set All to Absolute buttons added



## Other

- Open Workspace returned to the File menu
- support for new MapInfo Professional 7.5 fill patterns developed by Encom