

Head Office
Level 1,
123 Walker St
North Sydney
NSW 2060, Australia
Tel +61 2 9957 4117
Fax +61 2 9922 6141

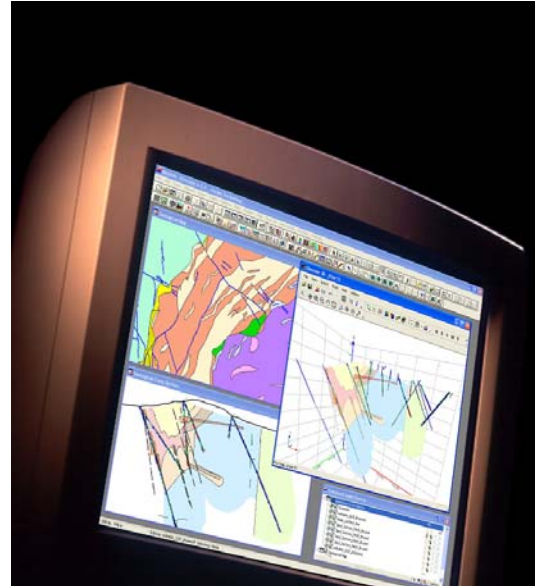
European Office
19B College Parade
Salisbury Road
Queens Park NW6 6RN
London, United Kingdom
Tel +44 2073 729 275

Web
www.encom.com.au

Email
discover@encom.com.au



Encom Discover 7.1

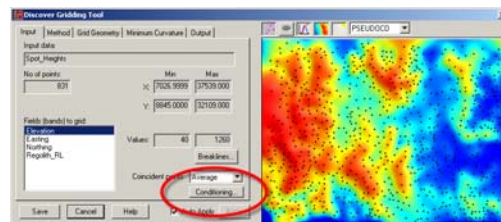


What's New in Encom Discover 7.1

New features added to Discover 7.1 include:

Surfaces

- **Gridding Tool**
New **Grid Conditioning** options to enable data to be clipped prior to gridding, null values to be specified, data ranges to be capped and nulls to be converted to background value



- New output grid **Clip** options to enable created grid to be clipped to the convex hull or concave hull of the input grid points
- **Grid Calculator**
New pull-down list added to re-use last entered expressions

- **Grid Filter**
New **Utils** button contains **Fill Nulls** option. This option will fill null regions within a grid or on the external boundaries using an interpolation of the surrounding grid cell values
- **Grid Utilities**
Changed name of **Line of Sight** tool to **Viewshed** tool
- **Contours**
New option to display coloured contours
- **Import/Export Grid**
Affine custom projections can now be used with imported grids
- **Modify Grid Display**
New **Settings** button added to the LUT Editor to access LUT files from another folder location

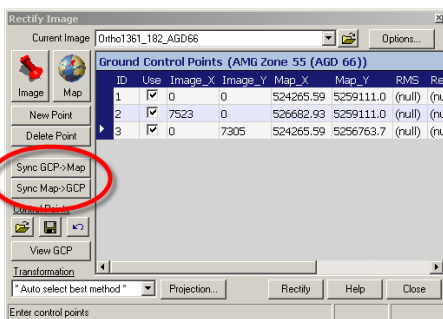
What's New in Discover 7.1

Drillholes

- Legend Editor**
 New **Settings** button added to access legend and pattern files from another folder location and set the **Pen file path** for new users
- Downhole Compositing**
 Updated internal dilution calculations for **Cut-Off grade** drillhole compositing. Includes new **Edge Grade** option to specify cut-off limit for grade at edge of composite interval
- Display Downhole Data**
 New **Regenerate all data** option to apply a modified downhole display setting to a number of existing sections

Images

- Rectify Image**
 New buttons to synchronise modified map and/or image control point locations and ground control point locations
- New image file library to read and write larger files and 2 & 8 bit images.



ColourMap

- Build Map for Colour Table**
 New option which enables a colour table to be displayed with attributes in a map window and can be used to create a legend

GeoChem

- Point Classification**
 New **Data Handling Options** added to replace values such as null, text or BDL samples in a geochemistry table with other values

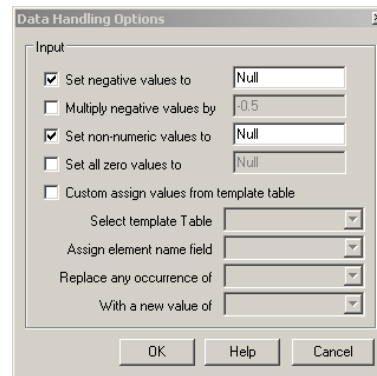


Table Utilities

- Workspace Editor**
 New **Set All to Current** button added to set table paths to current location

Object Editing

- Thin Polylines**
 Ability to specify thinning width units
- Key in Shapes**
 Changed **Elevation** to **Inclination** in Draw Line dialog

Map Making

- Add Text Labels**
 Expression syntax is now saved after labels have been created

Import and Export

- Advanced ASCII Import**
 New **Options** button to use last format file as default, rename selected coordinate fields to X and Y and specify output null value
- acquire Database Support**
 New support for acquire data model 3.9.4

General

- Configuration Settings**
 New buttons added to enable browsing to Discover program files and data folders.

Bug Fixes

Discover 7.1 contains over 60 bug fixes. For details, see "Readme.txt" during installation.

System Requirements

Encom Discover 7.1 requires MapInfo Professional 6.5 or later for Windows 2000/XP.