

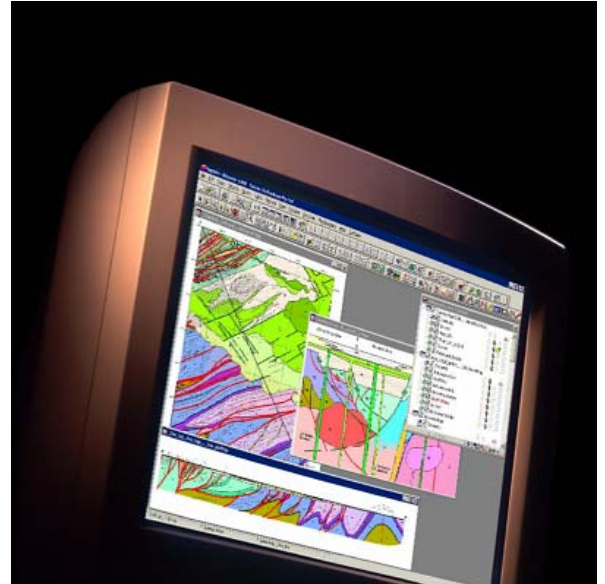
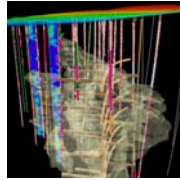
Level 1,
123 Walker St
North Sydney
NSW 2060, Australia
Tel +61 2 9957 4117
Fax +61 2 9922 6141

Web
www.encom.com.au

Email
discover@encom.com.au

 **MapInfo**
Strategic Partner

Encom Discover 7.0



What's New in Encom Discover 7.0

At a glance

- **Geochemistry**
New module for geochemical data analysis and visualisation
- **Images**
New suite of utilities for image rectification and manipulation
- **Grid Creation**
New algorithms, plus support for breakline input and multi-banded grids
- **Grid Calculator**
Advanced grid arithmetic, statistical analysis and Boolean calculations
- **Grid Filter**
Range of new FFT filters
- **Grid Utilities**
Extensive range of new grid utilities to classify, edit, vectorise and much more
- **Table Utilities**
New advanced tools for closing tables and opening workspaces
- **Map Window**
New distance/bearing tool with automatic attribute display

What's New in Discover 7.0

Images module

This new module provides a suite of utilities to rectify, clip, transform and convert raster image files directly within MapInfo Professional.

Rectify

- Load unprojected raster images and perform image transformations (warping) to register the images to your selected coordinate system



Properties

- Display image properties and metadata

Enhance

- Perform image enhancement operations such as edge filters, contrast enhancement, and stretching directly within MapInfo Professional

Filter

- Apply smoothing and edge detection filters

Clip

- Clip a raster image to a selected polygon object

Rotate

- Rotate an image on its axis or rotate image by a given angle while preserving its registration information

Convert

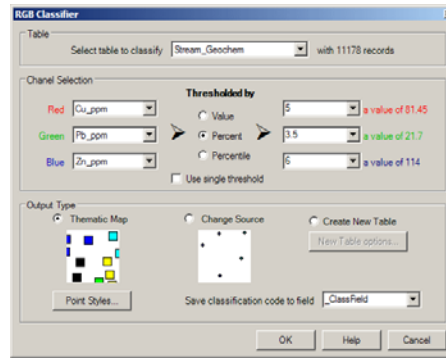
- Convert registered images between different file formats

Geochem module

A new Geochem module provides a range of tools for analysis and visualisation of geochemical data.

Point Classification

- Assign threshold values to selected elements and display properties to enable separation of data populations into classified groups

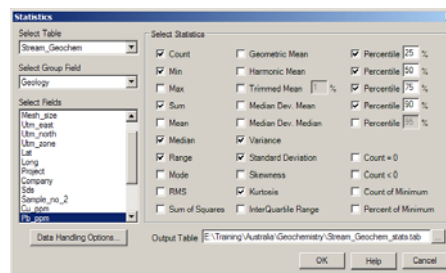


Data-Levelling

- Apply levelling/transformation operations to heterogenous datasets to assist in the detection of anomalous samples

Summary Statistics

- Compute various summary statistics for selected data populations

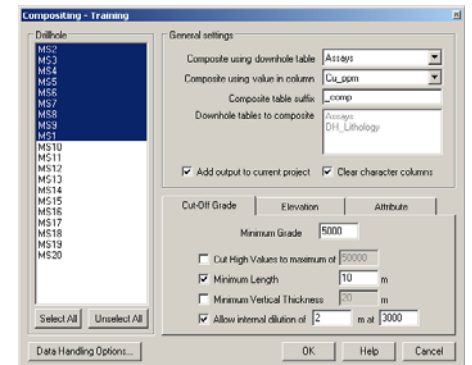


Compute Correlation

- Calculate the correlation coefficients for two elements and determine their relative variation

Drillholes

- Save a project workspace with hidden drillhole tables removed
- Load and use drillhole colour patterns from external sources
- Create a collar plan for a section to add to a layout
- Select scale and page size when adding a section to a layout
- Select multiple section lines and create all sections automatically
- Updated dialog and improved calculations for downhole compositing



Import and Export

- New DXF Import Utility, with 3D DXF support
- Gemcom binary (.bt2) support added
- Added DataShed API from Maxwell GeoServices

Map Autogrid

Display a dynamic coordinate grid in the active map window. The grid is automatically updated with each pan or zoom.

Scaled Output

New option to enter a user-defined maximum window size.

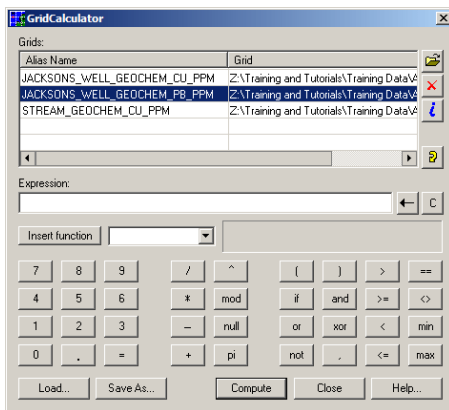
Surfaces

Improved Grid Creation

- New density kernel and distance gridding methods
- Support for multi-banded grids
- Option to include breaklines in the gridding process
- Support for RGB output

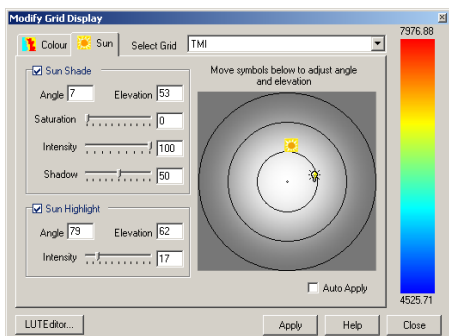
Grid Calculator

- New advanced grid calculator providing extensive grid arithmetic, statistical analysis and boolean calculations on one or more grids



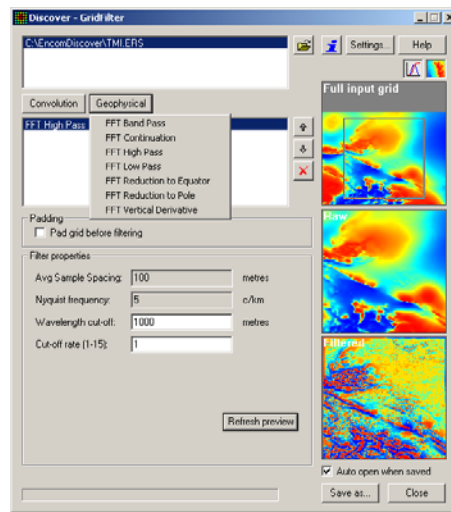
Modify Grid Display

- New interface
- Option to create and modify colour look-up tables
- Apply grid transparency
- Dynamic sun shading and highlighting



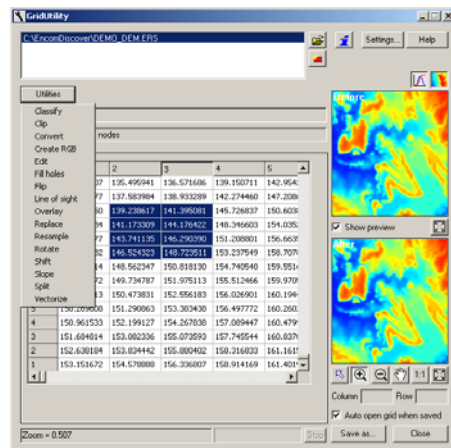
Grid Filter

- New interface
- Range of FFT filters added, including band pass, low pass, high pass, continuation, reduction to pole, reduction to equator and vertical derivative



Grid Utilities

- Extensive range of new grid utilities to classify, clip, convert, create RGB images, edit, fill holes, flip, overlay, replace, resample, rotate, shift, slope, split, vectorise and calculate line-of-sight



Object Editing

Align Objects

- New tool for aligning objects within a map window. Align top, bottom, left, right or centre.

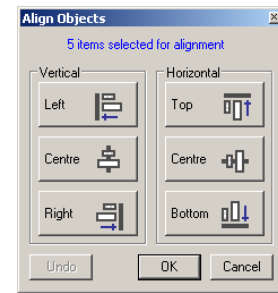
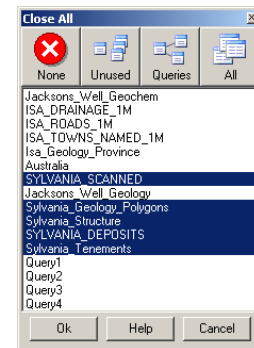


Table Utilities

Close All

- New tool for quick closure of queries, unused tables or all tables

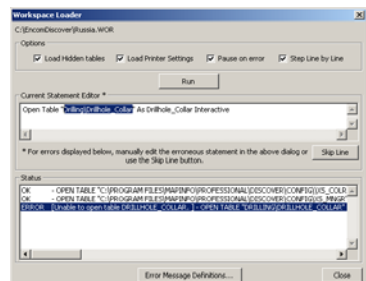


Link Documents

- Improved support for linking multiple external documents to map objects

Open Workspace Advanced

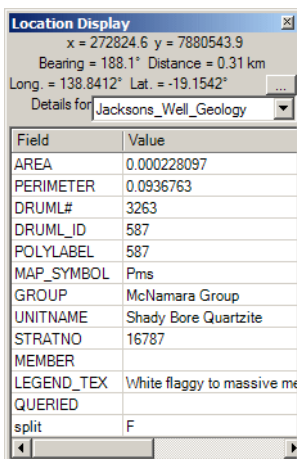
- New feature to step through one workspace command at a time, allowing editing or skipping of commands



Map Window Tools

Distance and Bearing

- Show cursor position in current and additional selected projection
- Display distance and bearing between two map window locations
- Automatically display table attribute data as cursor moves over corresponding map object

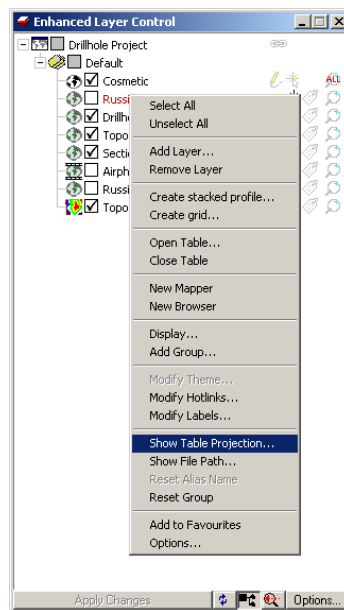


Create Registered World Raster Files

- Support for creation of a world file from the Convert Mapper to Registered Raster tool

Enhanced Layer Control

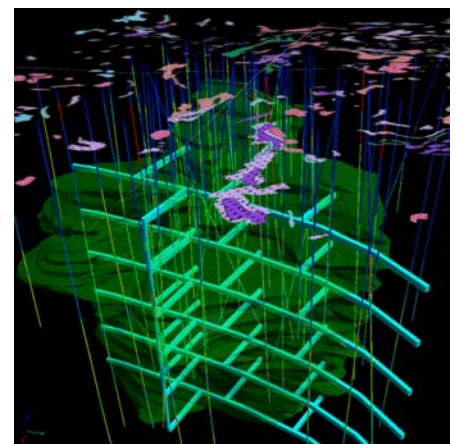
- Reset option to permanently remove metadata Group entry
- New Show Table Projection shortcut
- Shortcut to Grid Calculator



Other Discover Products

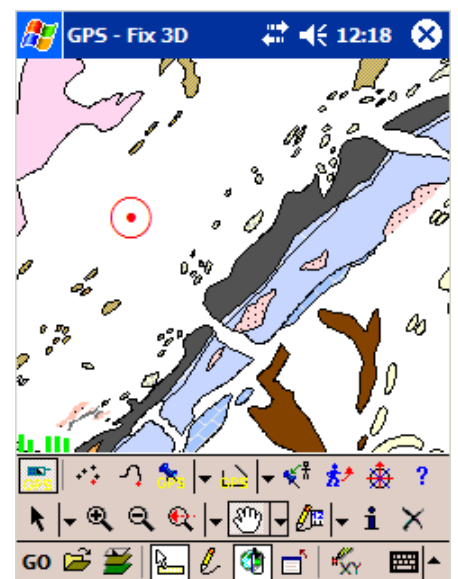
Discover 3D

A fully-integrated 3D extension for Encom Discover. Display drillholes, X-sections, surfaces, 3D vectors, voxel models, geophysical data and more. Generate 3D solids and create flythroughs for later playback.



Discover Mobile

The field companion for Encom Discover. Running on a Windows Mobile device, Discover Mobile is GPS-enabled for in-field data capture, sample logging, mapping and navigation.



For more information

For more information about any of Encom's products and services, please contact Encom directly or visit our website at www.encom.com.au

Our staff can provide detailed product brochures, software evaluation copies and arrange software demonstrations. Encom stages displays, demonstrations and training sessions at many of the major industry conferences around the world each year. See our website for details.

Head Office

Level 1, 123 Walker St
 North Sydney
 NSW 2060, Australia
 Tel +61 2 9957 4117
 Fax +61 2 9922 6141

Web

www.encom.com.au

Email

discover@encom.com.au